

incorporated under the laws of the District of Columbia to provide a balanced national transportation system by developing, operating, and improving U.S. intercity rail passenger service.

Amtrak operates an average of 212 trains per day, serving over 540 station locations in 46 States, over a system of approximately 22,000 route miles. Of this route system, Amtrak owns less than 1,000 track miles in the Northeast Corridor (Washington-New York-Boston; New Haven-Springfield; Philadelphia-Harrisburg), and several other small track segments throughout the country.

Amtrak owns or leases its stations and owns its own repair and maintenance facilities. The Corporation employs a total work force of approximately 22,205 and provides all reservation, station, and on-board service staffs, as well as train and engine operating crews. Outside the Northeast Corridor, Amtrak has historically contracted with privately or publicly owned railroads for the right to operate over their track and has compensated each railroad for its total package of services. Under contract, these railroads are responsible for the condition of the roadbed and for coordinating the flow of traffic.

In fiscal year 2001, Amtrak transported 23.4 million people with 64,000 passengers traveling via Amtrak per day. In addition, under contracts with several transit agencies, Amtrak carried over 61 million commuters.

Although Amtrak's basic route system was originally designated by the

Secretary of Transportation in 1971, modifications have been made to the Amtrak system and to individual routes that have resulted in more efficient and cost-effective operations. Currently, in the face of ongoing budget constraints, new service will only be added if a State agrees to share any operating losses associated with the new service or if the new service demonstrates satisfactory market support.

Amtrak began operation in 1971 with an antiquated fleet of equipment inherited from private railroads; some cars were nearly 30 years old. Since then, the fleet has been modernized and new state-of-the-art single- and bi-level passenger cars and locomotives have been added.

Ridership is steadily rising, and Amtrak is finding it increasingly difficult to meet the demands of increased travel patterns with its limited passenger fleet. To ease these equipment constraints, the Corporation is working to identify innovative funding sources in order to acquire additional passenger cars and locomotives.

Although no rail passenger system in the world makes a profit, Amtrak has made significant progress in reducing its dependence on Federal support, while at the same time improving the quality of service. Every year Amtrak moves closer to increasing the ratio of its earned revenue to total costs.

For further information, contact the Public Affairs Department, Amtrak, 60 Massachusetts Avenue NE., Washington, DC 20002. Phone, 202-906-3860. Internet, www.amtrak.com.

NATIONAL SCIENCE FOUNDATION

4201 Wilson Boulevard, Arlington, VA 22230
Phone, 703-292-5111. Internet, www.nsf.gov.

National Science Board

Chairman
Vice Chairman

EAMON M. KELLY
ANITA K. JONES

Members

BARRY C. BARISH, STEVEN C.
BEERING, RAY M. BOWEN,
DELORES M. ETTER, NINA V.
FEDOROFF, PAMELA A. FERGUSON,
KENNETH M. FORD, DANIEL E.
HASTINGS, ELIZABETH HOFFMAN,
GEORGE M. LANGFORD, JANE
LUBCHENCO, JOSEPH A. MILLER,
JR., DIANA S. NATALICIO,
DOUGLAS D. RANDALL, ROBERT
C. RICHARDSON, MICHAEL G.
ROSSMANN, MAXINE L. SAVITZ,
LUIS SEQUERIA, DANIEL
SIMBERLOFF, JOANNE VASQUEZ,
WARREN M. WASHINGTON, JOHN
A. WHITE, MARK S. WRIGHTON

(*Ex officio*)
Executive Officer
Inspector General

RITA R. COLWELL
MARTA C. CEHELSKY
CHRISTINE C. BOESZ

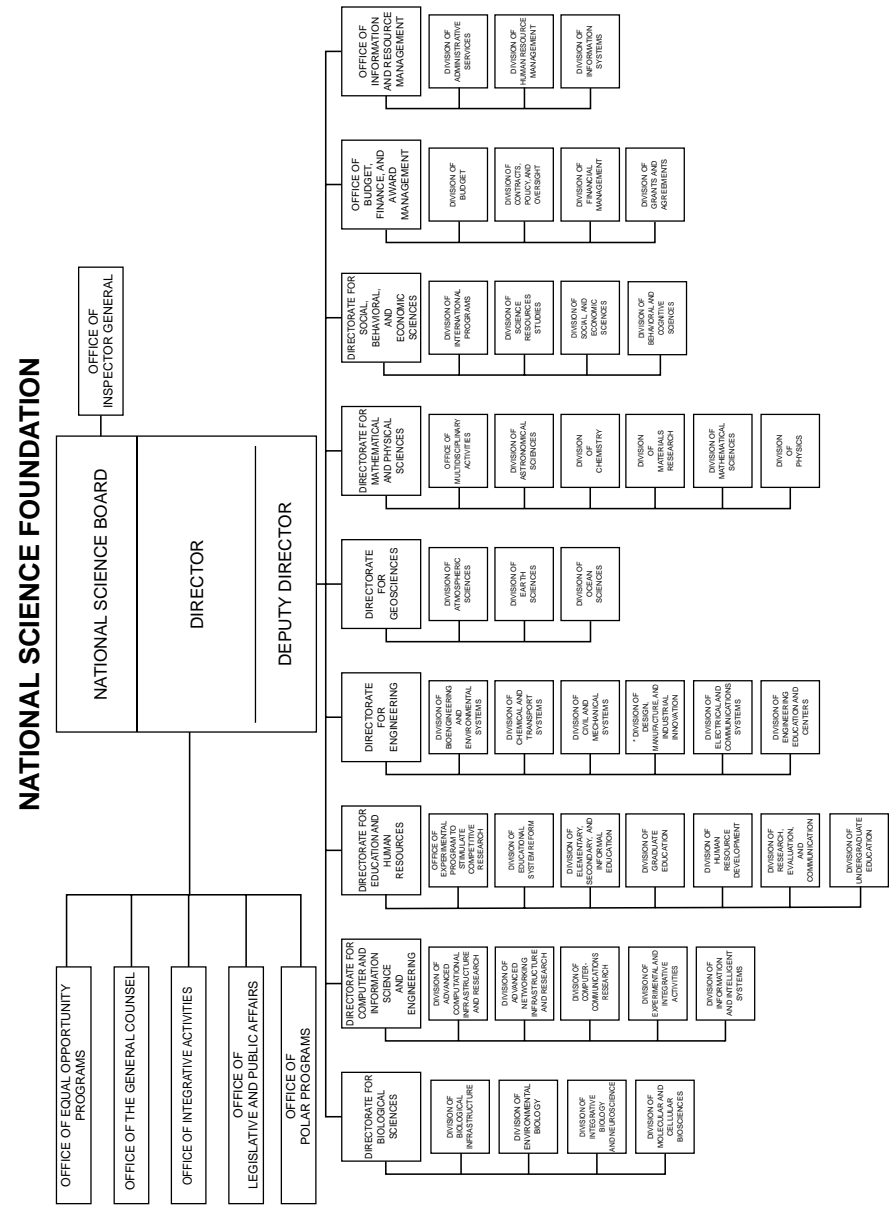
Officials:

Director
Deputy Director
Assistant Director for Biological Sciences
Assistant Director for Computer and
Information Science and Engineering
Assistant Director for Education and Human
Resources
Assistant Director for Engineering
Assistant Director for Geosciences
Assistant Director for Mathematical and
Physical Sciences
Assistant Director for Social, Behavioral, and
Economic Sciences
Chief Financial Officer and Director, Office
of Budget, Finance, and Award
Management
Director, Office of Information and Resource
Management
Director, Office of Integrative Activities
Director, Office of Legislative and Public
Affairs
Director, Office of Polar Programs
General Counsel

RITA R. COLWELL
JOSEPH BORDOGNA
MARY E. CLUTTER
PETER A. FREEMAN
JUDITH RAMALEY
ESIN GULARI, *Acting*
MARGARET S. LEINEIN
JOHN B. HUNT, *Acting*
NORMAN M. BRADBURN
THOMAS N. COOLEY
ANTHONY ARNOLIE
NATHANIEL G. PITTS
CURTIS B. SUPLEE
KARL A. ERB
LAWRENCE RUDOLPH

[For the National Science Foundation statement of organization, see the *Federal Register* of February 8, 1993, 58 FR 7587–7595; May 27, 1993, 58 FR 30819; May 2, 1994, 59 FR 22690; and Oct. 6, 1995, 60 FR 52431]

The National Science Foundation promotes the progress of science and engineering through the support of research and education programs. Its major emphasis is on high-quality, merit-selected research—the search for improved understanding of the fundamental laws of nature upon which our future well-being as a nation depends. Its educational programs are aimed at ensuring increased understanding of science and engineering at all educational levels, maintaining an adequate supply of scientists, engineers, and science educators to meet our country's needs.



The National Science Foundation is an independent agency created by the National Science Foundation Act of 1950, as amended (42 U.S.C. 1861–1875).

The purposes of the Foundation are to increase the Nation's base of scientific and engineering knowledge and strengthen its ability to conduct research in all areas of science and engineering; to develop and help implement science and engineering education programs that can better prepare the Nation for meeting the challenges of the future; and to promote international cooperation through science and engineering. In its role as a leading Federal supporter of science and engineering, the agency also has an important role in national policy planning.

The Director and the Deputy Director are appointed by the President, with the advice and consent of the Senate, to a 6-year term and an unspecified term, respectively. The Foundation's activities are guided by the National Science Board. The National Science Board is composed of 24 members and the Director *ex officio*. Members are appointed by the President with the advice and consent of the Senate, for 6-year terms, with one-third appointed every 2 years. They are selected because of their records of distinguished service in science, engineering, education, research management, or public affairs to be broadly representative of the views of national science and engineering leadership. The Board also has a broad national policy responsibility to monitor and make recommendations to promote the health of U.S. science and engineering research and education.

The Foundation's Office of Inspector General is responsible for conducting and supervising audits, inspections, and investigations relating to the programs and operations of the Foundation, including allegations of misconduct in science.

Activities

The National Science Foundation initiates and supports fundamental, long-term, merit-selected research in all the

scientific and engineering disciplines. This support is made through grants, contracts, and other agreements awarded to universities, colleges, academic consortia, and nonprofit and small business institutions. Most of this research is directed toward the resolution of scientific and engineering questions concerning fundamental life processes, natural laws and phenomena, fundamental processes influencing the human environment, and the forces affecting people as members of society as well as the behavior of society as a whole.

The Foundation encourages cooperative efforts by universities, industries, and government. It also promotes the application of research and development for better products and services that improve the quality of life and stimulate economic growth.

The Foundation promotes the development of research talent through support of undergraduate and graduate students, as well as postdoctoral researchers. It administers special programs to identify and encourage participation by groups underrepresented in science and technology and to strengthen research capability at smaller institutions, small businesses, undergraduate colleges, and universities.

The Foundation supports major national and international science and engineering activities, including the U.S. Antarctic Program, the Ocean Drilling Program, global geoscience studies, and others. Cooperative scientific and engineering research activities support exchange programs for American and foreign scientists and engineers, execution of jointly designed research projects, participation in the activities of international science and engineering organizations, and travel to international conferences.

Support is provided through contracts and cooperative agreements with national centers where large facilities are made available for use by qualified scientists and engineers. Among the types of centers supported by the Foundation are astronomy and atmospheric sciences, biological and engineering research, science and

technology, supercomputers, and long-term ecological research sites.

The Foundation's science and engineering education activities include grants for research and development activities directed to model instructional materials for students and teachers and the application of advanced technologies to education. Grants also are available for teacher preparation and enhancement and informal science education activities. Funding is also provided for college science instrumentation, course and curriculum improvement, faculty and student activities, and minority resource centers. In addition, studies of the status of math, science, and engineering education are supported.

The National Science Board presents the Vannevar Bush Award annually to a person who, through public service activities in science and technology, has made an outstanding contribution toward the welfare of mankind and the Nation. It also presents the Public Service Award to an individual and to a company, corporation, or organization who, through contributions to public service in areas other than research, have increased the public understanding of science or engineering. The National Science Foundation annually presents the Alan T. Waterman Award to an outstanding young scientist or engineer for support of research and study. The Foundation also provides administrative support for the President's Committee on the National Medal of Science.

Information on these awards is available through the Internet, at www.nsf.gov/home/nsb/start.htm.

Sources of Information

Board and Committee Minutes

Summary minutes of the open meetings of the Board may be obtained from the National Science Board Office. Phone, 703-292-7000. Information on NSB meetings, minutes, and reports is available through the Internet, at www.nsf.gov/home/nsb/start.htm. Summary minutes of the Foundation's advisory groups may be obtained from the contacts listed in the notice of

meetings published in the *Federal Register* or under "News and Media" on the Foundation's Web site. General information about the Foundation's advisory groups may be obtained from the Division of Human Resource Management, Room 315, Arlington, VA 22230. Phone, 703-292-8180.

Contracts The Foundation publicizes contracting and subcontracting opportunities in the *Commerce Business Daily* and other appropriate publications. Organizations seeking to undertake contract work for the Foundation should contact either the Division of Contracts, Policy, and Oversight (phone, 703-292-8240) or the Division of Administrative Services (phone, 703-292-8190), National Science Foundation, Arlington, VA 22230.

Electronic Access Information regarding NSF programs and services is available through the Internet, at www.nsf.gov.

Employment Inquiries may be directed to the Division of Human Resource Management, National Science Foundation, Room 315, Arlington, VA 22230. Phone, 703-292-8180, or, for the hearing impaired (TDD), 703-292-8044. Internet, www.nsf.gov/jobs.

Fellowships Consult the *NSF Guide to Programs* and appropriate announcements and brochures for postdoctoral fellowship opportunities that may be available through some Foundation divisions. Beginning graduate and minority graduate students wishing to apply for fellowships should contact the Directorate for Education and Human Resources. Phone, 703-292-8601.

Freedom of Information Act Requests

Requests for agency records should be submitted in accordance with the Foundation FOIA regulation at 45 CFR part 612. Such requests should be clearly identified with "FOIA REQUEST" and be addressed to the FOIA Officer, Office of General Counsel, National Science Foundation, Room 1265, Arlington, VA 22230. Phone, 703-292-8060. Fax, 703-292-9041. E-mail, foia@nsf.gov.

Grants Individuals or organizations who plan to submit grant proposals should refer to the *NSF Guide to Programs, Grant Proposal Guide* (NSF-01-2), and appropriate program brochures and announcements that may be obtained as indicated in the Publications section. Grant information is also available electronically through the Internet, at www.nsf.gov.

Office of Inspector General General inquiries may be directed to the Office of Inspector General, National Science Foundation, Room 1135, Arlington, VA 22230. Phone, 703-292-7100.

Privacy Act Requests Requests for personal records should be submitted in accordance with the Foundation Privacy Act regulation at 45 CFR, part 613. Such requests should be clearly identified with "PRIVACY ACT REQUEST" and be addressed to the Privacy Act Officer, National Science Foundation, Room 1265, Arlington, VA 22230. Phone, 703-292-8060.

Publications The National Science Board assesses the status and health of science and its various disciplines, including such matters as human and material resources, in reports submitted to the President for submission to the Congress. The most recent report is *Science and Engineering Indicators, 2000* (NSB-00-01).

The National Science Foundation issues publications that announce and describe new programs, critical dates, and application procedures for competitions. Single copies of these publications can be ordered by writing to NSF Clearinghouse, P.O. Box 218,

Jessup, MD 20794-0218. Phone, 301-947-2722. E-mail, pubinfo@nsf.gov. Internet, www.nsf.gov.

Other Foundation publications include: the *Grant Policy Manual* (NSF-01-2), which contains comprehensive statements of Foundation grant administration policy, procedures, and guidance; *Guide to Programs*, which summarizes information about support programs; the quarterly *Antarctic Journal of the United States* and its annual review issue; and the *NSF Annual Report*. These publications are available from the Superintendent of Documents, Government Printing Office, Washington, DC 20402. Internet, www.nsf.gov.

Reading Room A collection of Foundation policy documents and staff instructions, as well as current indexes, are available to the public for inspection and copying during regular business hours, 8:30 a.m. to 5 p.m., Monday through Friday, in the National Science Foundation Library, Room 225, Arlington, VA 22230. Phone, 703-292-7830.

Small Business Activities The Office of Small Business Research and Development provides information on opportunities for Foundation support to small businesses with strong research capabilities in science and technology. Phone, 703-292-8330. The Office of Small and Disadvantaged Business Utilization oversees agency compliance with the provisions of the Small Business Act and the Small Business Investment Act of 1958, as amended (15 U.S.C. 631, 661, 683). Phone, 703-292-8330.

For further information, contact the National Science Foundation Information Center, 4201 Wilson Boulevard, Arlington, VA 22230. Phone, 703-292-5111. TDD, 703-292-5090. E-mail, info@nsf.gov. Internet, www.nsf.gov.

NATIONAL TRANSPORTATION SAFETY BOARD

490 L'Enfant Plaza SW., Washington, DC 20594
Phone, 202-314-6000. Internet, www.nts.gov.

Chairman

ELLEN G. ENGLEMAN